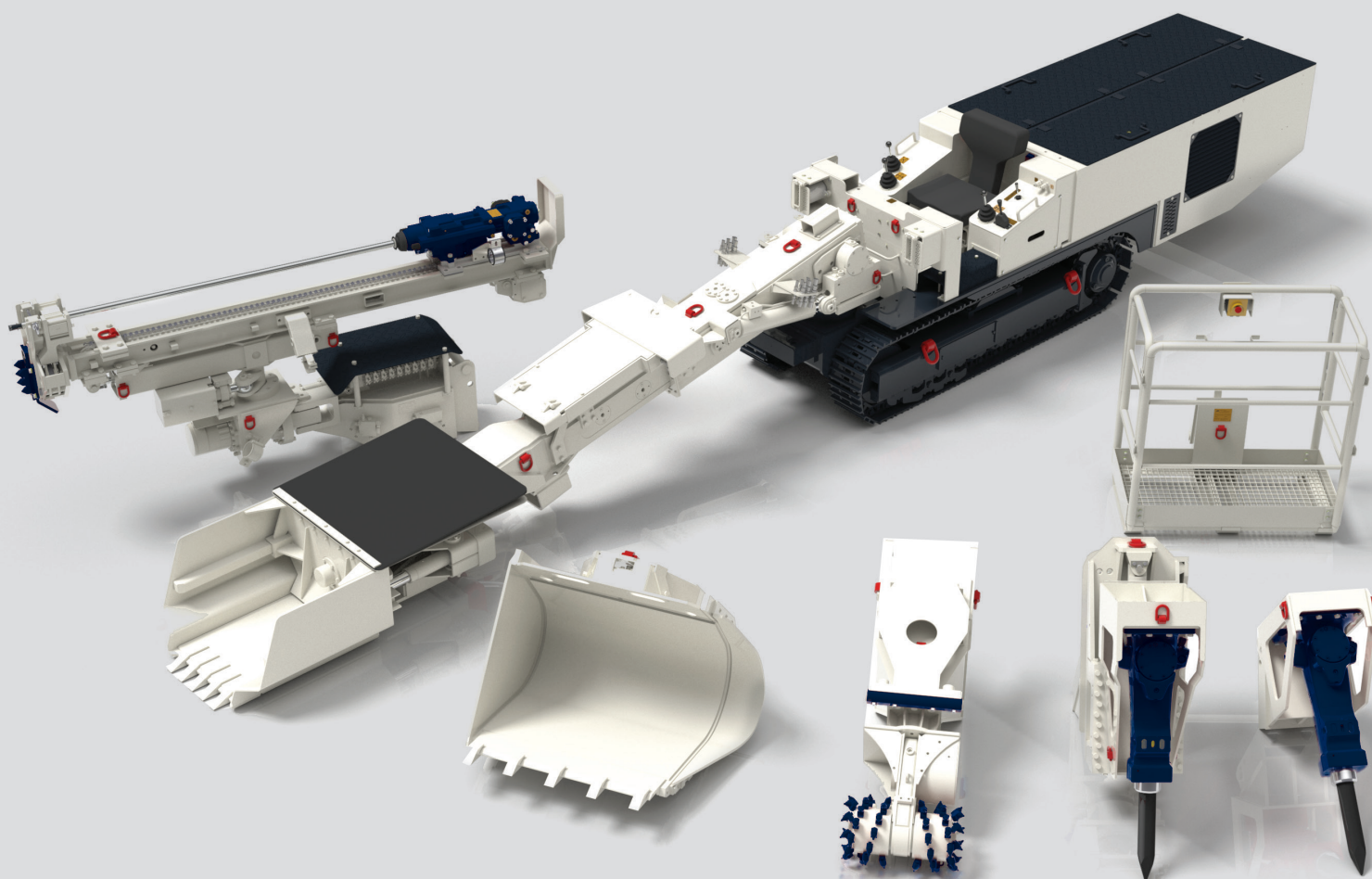
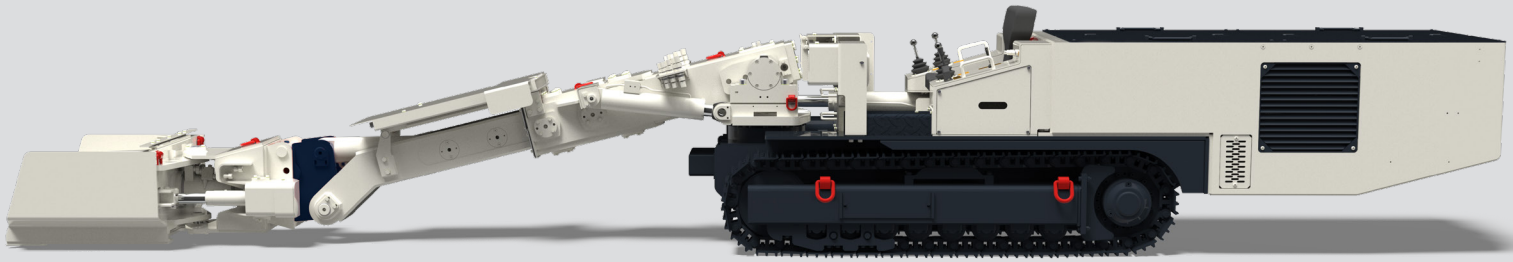


HAZEMAG



HAZEMAG Multi-Functional Loader | HMF 600





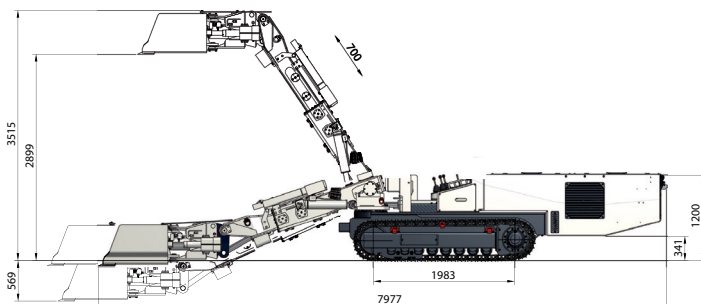
HMF 600 with box-type bucket

The Multi-Functional Loader HMF 600 is the universal multipurpose loader for mining. Next to different buckets, with volumes of 0.3 m³ and 0.6 m³, there are a variety of other tools and attachments for the HMF 600 available. Rapid attachment of various tools and use of the HMF 600 for loading, dinting, blast hole drilling, bolting and further applications is achieved by an innovative quick coupling device.

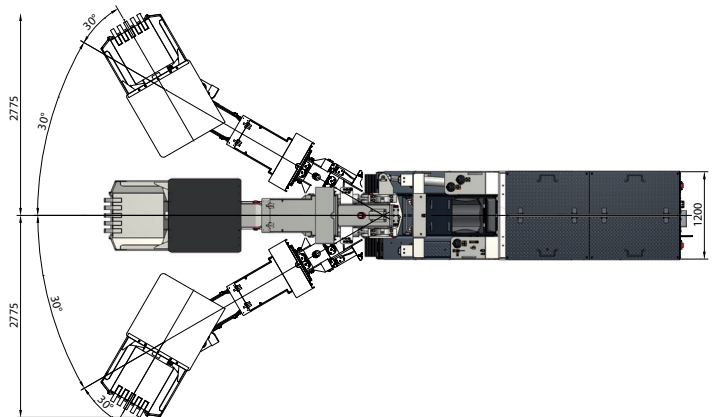
The hydraulic control system allows for utilization of hydraulic drive power to full extent when operating with the various attachment tools. The ergonomic control stand offers very quick and precise handling and greatly enhances operator comfort.

- uniform and smooth tramming
- automatic speed limitation in inclined roadways
- long service life of the tramming drives
- high operating reliability.

Technical data	
Bucket capacity (side-dump bucket)	0.6 m ³
Bucket capacity (box-type bucket)	0.3 m ³
Motor output	55/63 kW
Tramming speed	1.15 m/s
Gradeability (longitudinal)	±20.0 degrees
Gradeability (transverse)	±8.0 degrees
Telescopic stroke of boom	700 mm
Breaking force at bucket tooth	40 kN
Penetrating force	100 kN
Total weight approx.	9,350 kg
Ground pressure	0.1 MPa
Attachments (quick coupling device)	<ul style="list-style-type: none"> ■ hydraulic drilling/bolting device ■ hydraulic breaker ■ cutter head
Accessories	<ul style="list-style-type: none"> ■ protective roof ■ cable reel ■ hydraulic winch

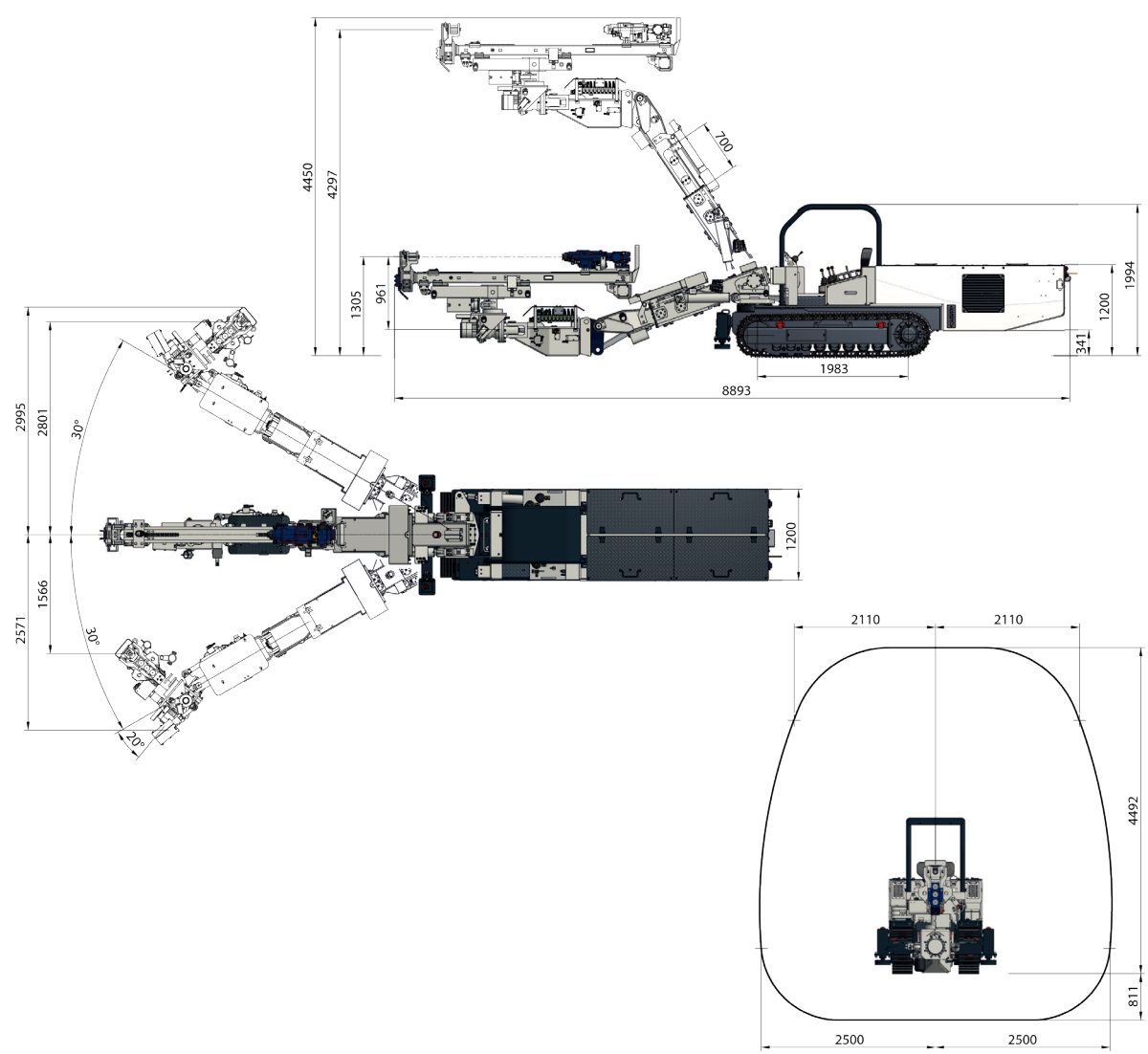


HMF 600 with box-type bucket

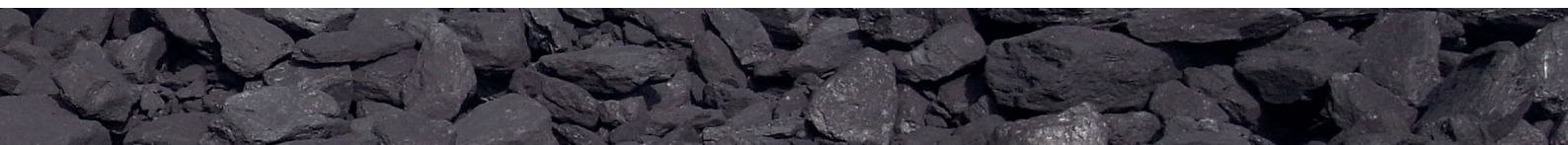




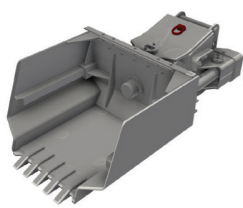
Attachable drilling device



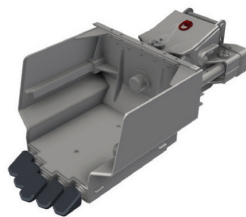
HMF 600 with drilling/bolting device



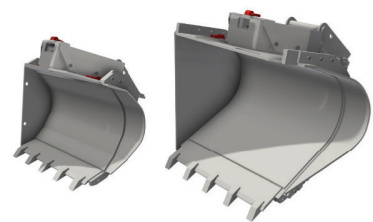
Attachments for HMF 600



Box-type bucket



Box-type bucket with hydraulic hammers



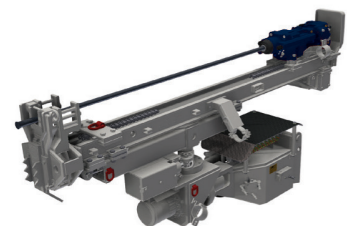
Side-dump bucket



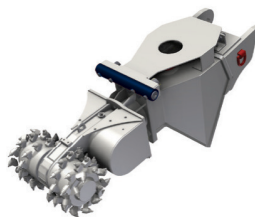
Backhoe bucket



Service platform



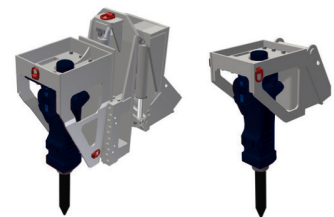
Drilling/bolting device



Cutter head



Manipulator



Hydraulic breakers

HMF 600 attachments